

McLennan

C O M M U N I T Y

COLLEGE

ENROLLMENT PROFILE –
TRANSFER STUDENTS
SPRING 2017

Prepared by:
Office of Institutional Research
Laura Wichman, Senior Research Analyst
McLennan Community College

Executive Summary

Spring 2017

The undergraduate new transfer enrollment is 398. Fifty percent are from McLennan County. Sixty-one percent of students are female, and forty-six percent are members of racial or ethnic minority groups. Twenty-eight percent of students are in the age range of 18-21 with an overall average age of 28.6 years at the beginning of the spring term.

Seventy-three percent of students are enrolled in academic majors designed to transfer to a four year school. Using the state definition of full-time (which excludes flex classes), thirty-eight percent are full-time students. The overall average credit hour load excluding flex classes is 8.7. If flex classes are included, the percentage of full-time students jumps to forty-nine percent and the average credit hour load is 10.3.

The top 5 areas of study (by CIP Code) are General Studies (32.2%), Transient, Non-Degree Seeker (16.5%), Liberal Arts & Sciences (14.3%), Business Administration and Management (3.8%), and Hospital and Health Care Facilities Administration/Management (3.2%).

Spring 2016

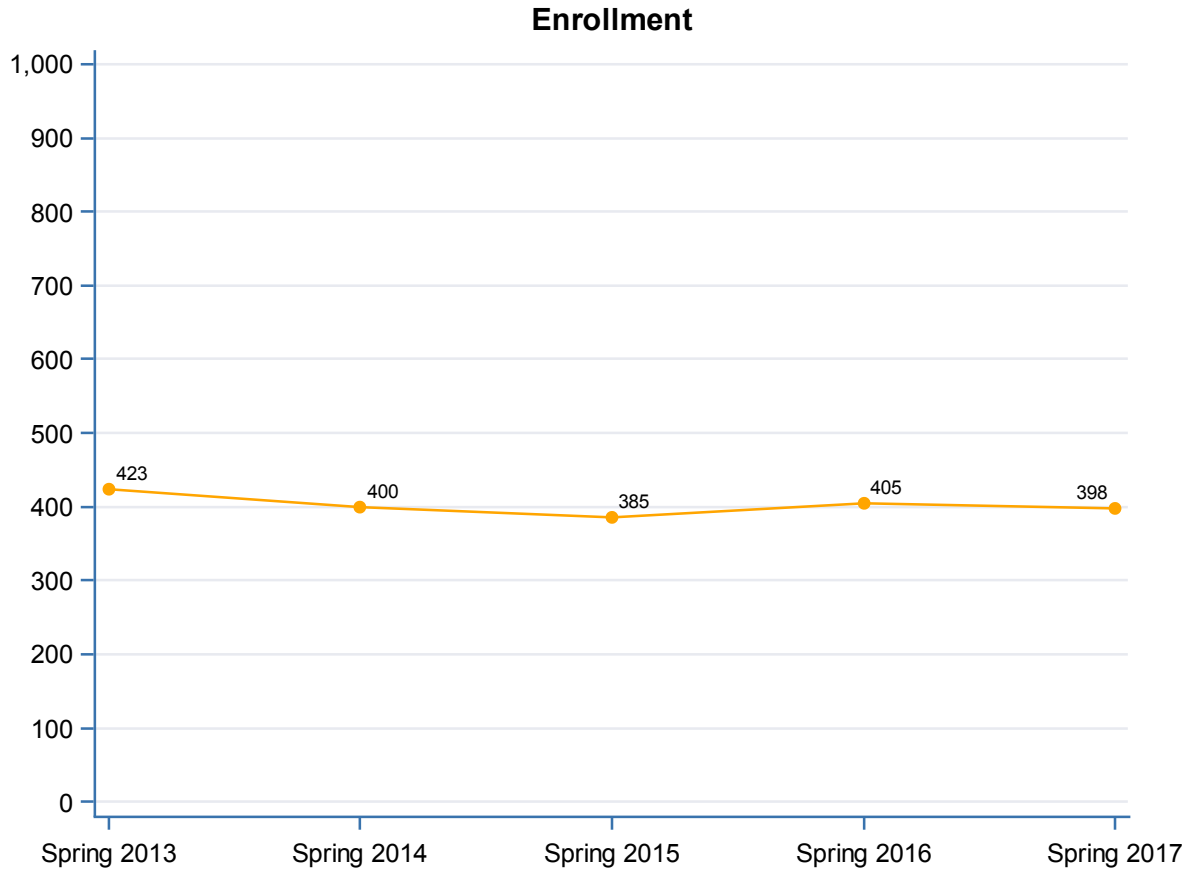
The undergraduate new transfer enrollment is 405. Fifty-one percent are from McLennan County. Sixty-two percent of students are female, and forty-six percent are members of racial or ethnic minority groups. Twenty-four percent of students are in the age range of 18-21 with an overall average age of 30.1 years at the beginning of the spring term.

Sixty-six percent of students are enrolled in academic majors designed to transfer to a four year school. Using the state definition of full-time (which excludes flex classes), twenty-nine percent are full-time students. The overall average credit hour load excluding flex classes is 8.1. If flex classes are included, the percentage of full-time students jumps to forty percent and the average credit hour load is 9.9.

The top 5 areas of study (by CIP Code) are General Studies (25.6%), Liberal Arts & Sciences (14.9%), Transient, Non-Degree Seeker (8.0%), Hospital and Health Care Facilities Administration/Management (8.0%), and Business Administration and Management (5.6%).

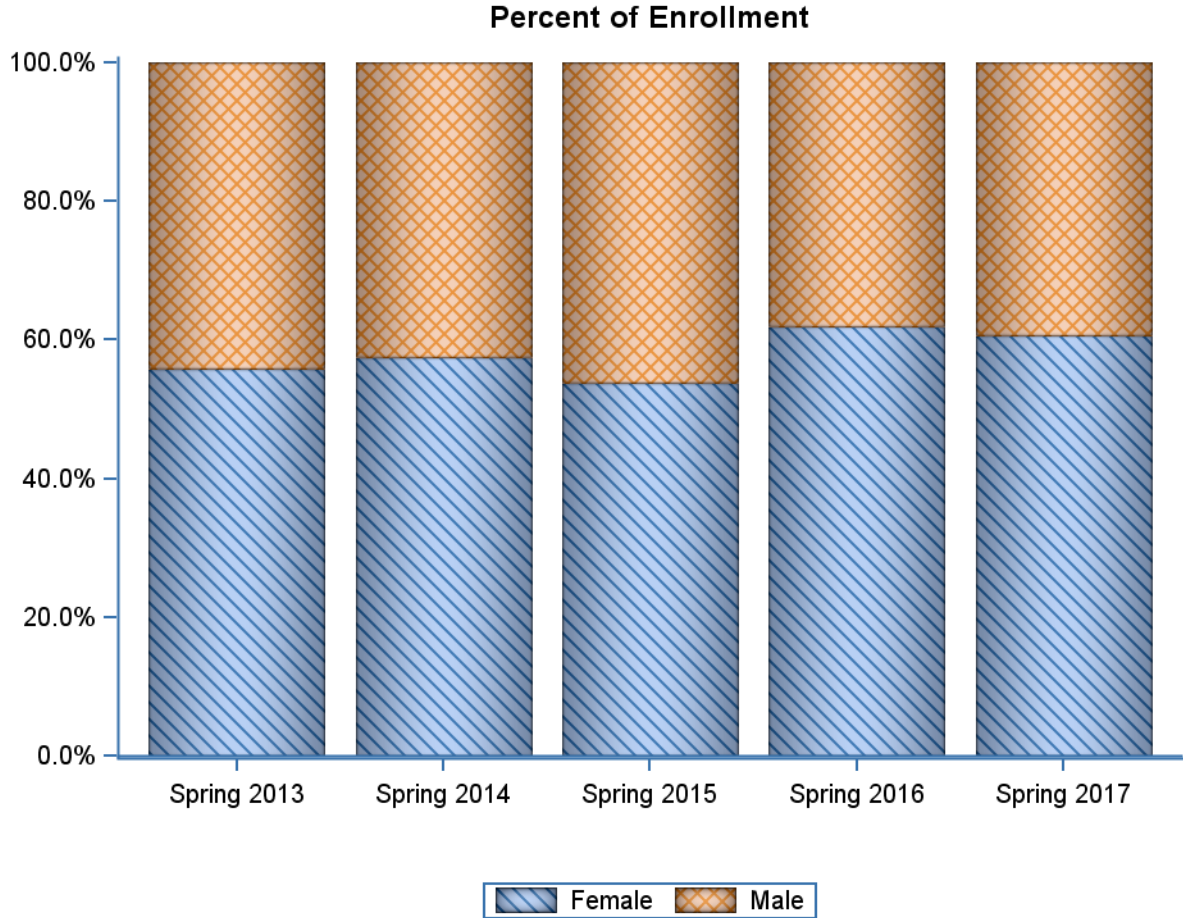
Profile of New Transfer Students, Spring 2013 to Spring 2017 Enrollment

| Term | Enrolled |
|-------------|----------|
| Spring 2013 | 423 |
| Spring 2014 | 400 |
| Spring 2015 | 385 |
| Spring 2016 | 405 |
| Spring 2017 | 398 |



Profile of New Transfer Students, Spring 2013 to Spring 2017 Gender

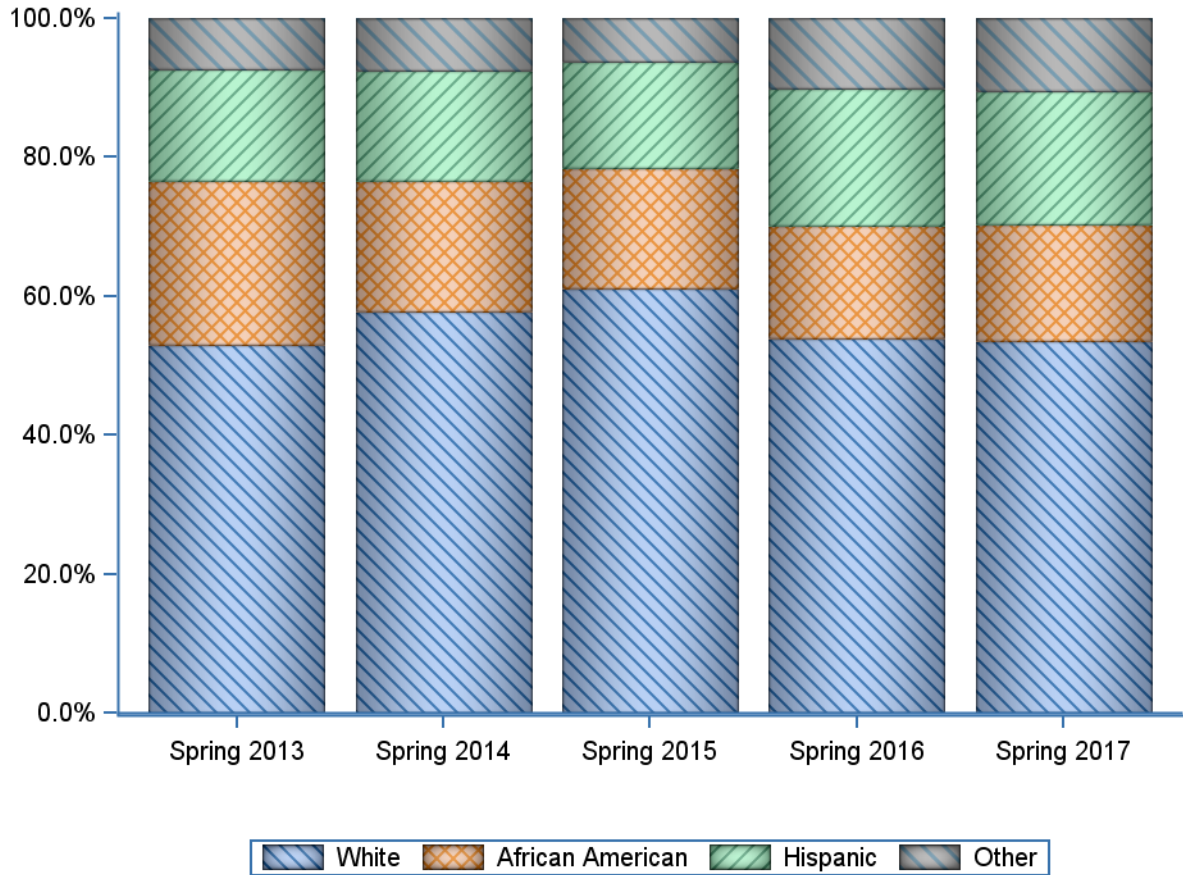
| | Spring 2013 | | Spring 2014 | | Spring 2015 | | Spring 2016 | | Spring 2017 | |
|---------------|-------------|--------|-------------|--------|-------------|--------|-------------|--------|-------------|--------|
| | # | % | # | % | # | % | # | % | # | % |
| Female | 236 | 55.8% | 230 | 57.5% | 207 | 53.8% | 251 | 62.0% | 241 | 60.6% |
| Male | 187 | 44.2% | 170 | 42.5% | 178 | 46.2% | 154 | 38.0% | 157 | 39.4% |
| Total | 423 | 100.0% | 400 | 100.0% | 385 | 100.0% | 405 | 100.0% | 398 | 100.0% |



Profile of New Transfer Students, Spring 2013 to Spring 2017 Ethnicity

| | Spring 2013 | | Spring 2014 | | Spring 2015 | | Spring 2016 | | Spring 2017 | |
|-------------------------|-------------|--------|-------------|--------|-------------|--------|-------------|--------|-------------|--------|
| | # | % | # | % | # | % | # | % | # | % |
| White | 224 | 53.0% | 231 | 57.8% | 235 | 61.0% | 218 | 53.8% | 213 | 53.5% |
| African American | 100 | 23.6% | 75 | 18.8% | 67 | 17.4% | 66 | 16.3% | 67 | 16.8% |
| Hispanic | 68 | 16.1% | 64 | 16.0% | 59 | 15.3% | 80 | 19.8% | 76 | 19.1% |
| Other | 31 | 7.3% | 30 | 7.5% | 24 | 6.2% | 41 | 10.1% | 42 | 10.6% |
| Total | 423 | 100.0% | 400 | 100.0% | 385 | 100.0% | 405 | 100.0% | 398 | 100.0% |

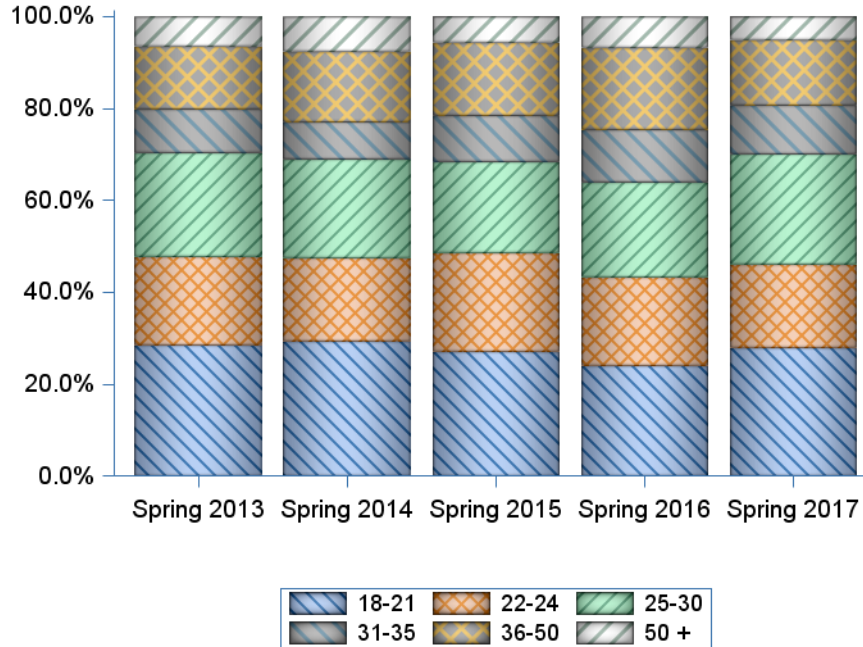
Percent of Enrollment



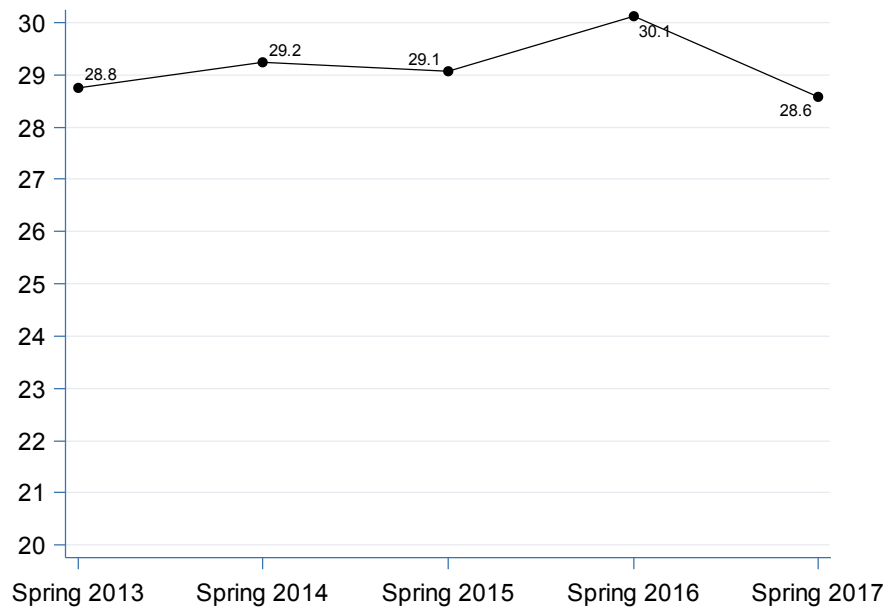
Profile of New Transfer Students, Spring 2013 to Spring 2017 Age Category

| | Spring 2013 | | Spring 2014 | | Spring 2015 | | Spring 2016 | | Spring 2017 | |
|--------------|-------------|--------|-------------|--------|-------------|--------|-------------|--------|-------------|--------|
| | # | % | # | % | # | % | # | % | # | % |
| 18-21 | 121 | 28.6% | 118 | 29.5% | 105 | 27.3% | 97 | 24.0% | 111 | 27.9% |
| 22-24 | 81 | 19.1% | 72 | 18.0% | 82 | 21.3% | 78 | 19.3% | 73 | 18.3% |
| 25-30 | 96 | 22.7% | 86 | 21.5% | 77 | 20.0% | 84 | 20.7% | 95 | 23.9% |
| 31-35 | 40 | 9.5% | 32 | 8.0% | 38 | 9.9% | 46 | 11.4% | 42 | 10.6% |
| 36-50 | 58 | 13.7% | 62 | 15.5% | 61 | 15.8% | 73 | 18.0% | 57 | 14.3% |
| 50 + | 27 | 6.4% | 30 | 7.5% | 22 | 5.7% | 27 | 6.7% | 20 | 5.0% |
| Total | 423 | 100.0% | 400 | 100.0% | 385 | 100.0% | 405 | 100.0% | 398 | 100.0% |

Percent of Enrollment

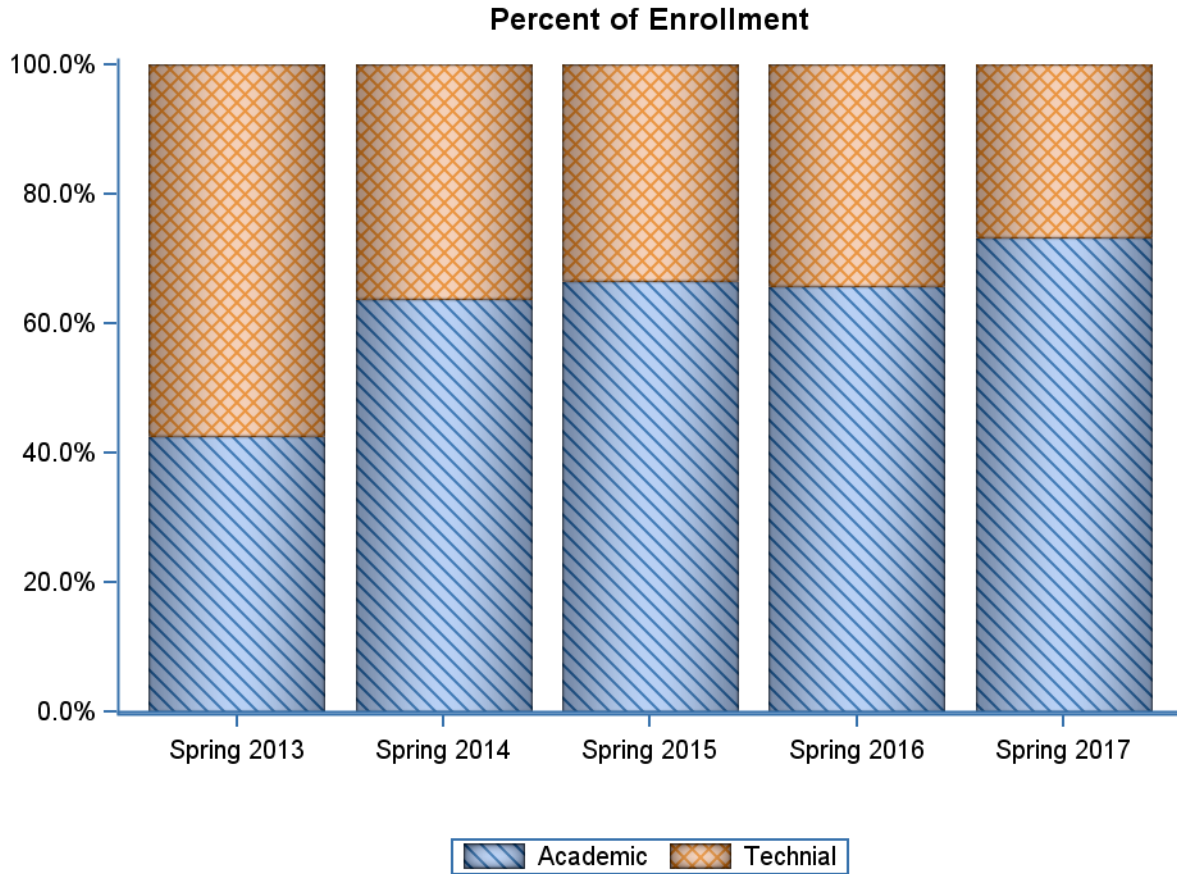


Average Age



Profile of New Transfer Students, Spring 2013 to Spring 2017 Major Type

| | Spring 2013 | | Spring 2014 | | Spring 2015 | | Spring 2016 | | Spring 2017 | |
|-----------------|-------------|--------|-------------|--------|-------------|--------|-------------|--------|-------------|--------|
| | # | % | # | % | # | % | # | % | # | % |
| Academic | 180 | 42.6% | 255 | 63.8% | 256 | 66.5% | 266 | 65.7% | 292 | 73.4% |
| Technial | 243 | 57.4% | 145 | 36.3% | 129 | 33.5% | 139 | 34.3% | 106 | 26.6% |
| Total | 423 | 100.0% | 400 | 100.0% | 385 | 100.0% | 405 | 100.0% | 398 | 100.0% |

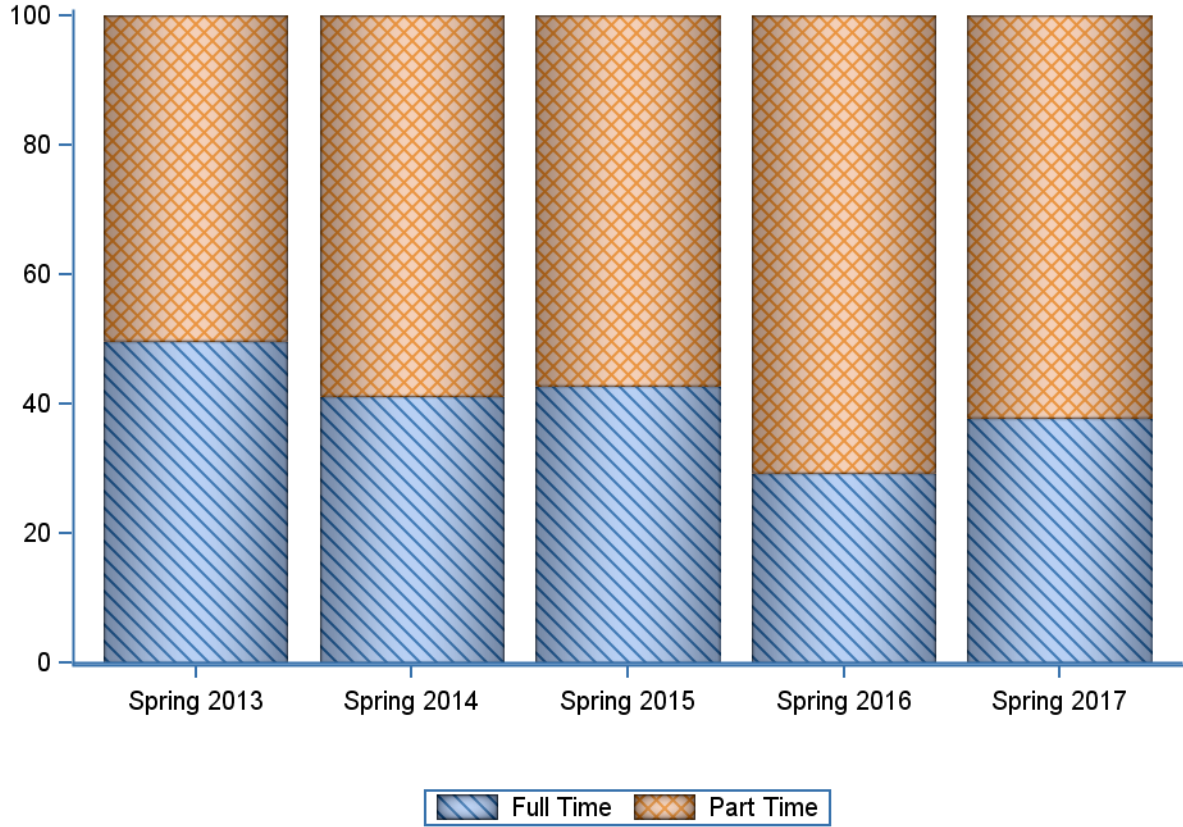


Beginning in Fall 2013 'Pre' Health Care majors were no longer counted as workforce majors

Profile of New Transfer Students, Spring 2013 to Spring 2017 Full-Time/Part-Time Status

| | Spring 2013 | | Spring 2014 | | Spring 2015 | | Spring 2016 | | Spring 2017 | |
|------------------|-------------|--------|-------------|--------|-------------|--------|-------------|--------|-------------|--------|
| | # | % | # | % | # | % | # | % | # | % |
| Full Time | 210 | 49.6% | 165 | 41.3% | 165 | 42.9% | 119 | 29.4% | 151 | 37.9% |
| Part Time | 213 | 50.4% | 235 | 58.8% | 220 | 57.1% | 286 | 70.6% | 247 | 62.1% |
| Total | 423 | 100.0% | 400 | 100.0% | 385 | 100.0% | 405 | 100.0% | 398 | 100.0% |

Percent of Enrollment

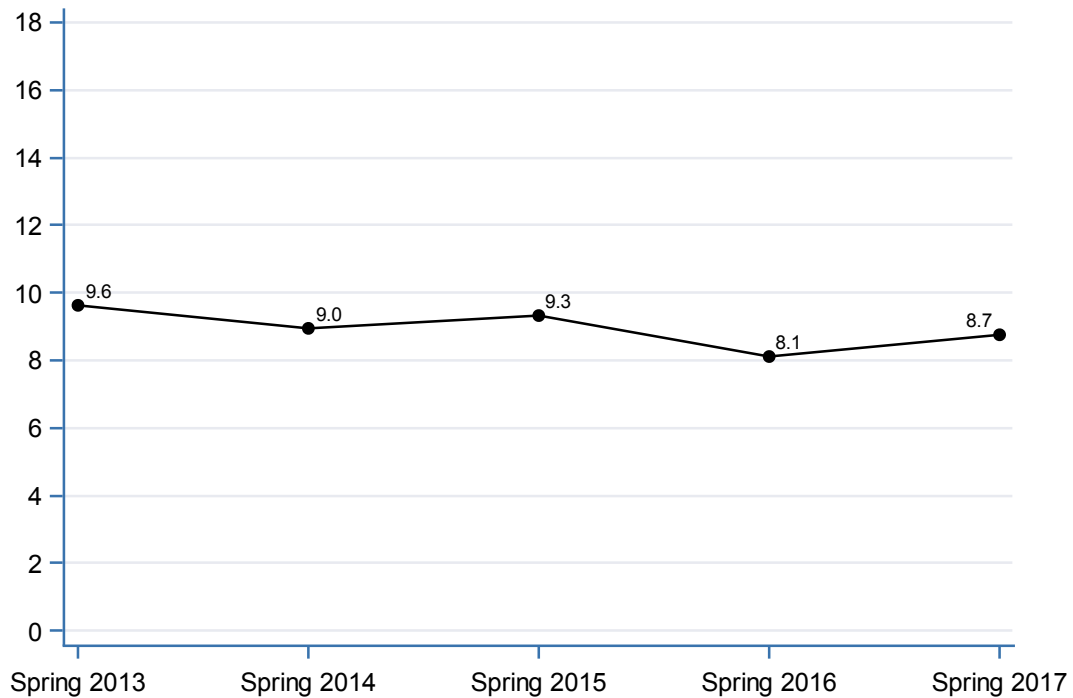


Status is defined by the state definition of full-time, which excludes flex classes

Profile of New Transfer Students, Spring 2013 to Spring 2017 Attempted Hours

| | Spring 2013 | | Spring 2014 | | Spring 2015 | | Spring 2016 | | Spring 2017 | |
|---------------------|-------------|--------|-------------|--------|-------------|--------|-------------|--------|-------------|--------|
| | # | % | # | % | # | % | # | % | # | % |
| Less than 6 | 81 | 19.1% | 99 | 24.8% | 77 | 20.0% | 118 | 29.1% | 109 | 27.4% |
| 06-11 | 132 | 31.2% | 136 | 34.0% | 143 | 37.1% | 168 | 41.5% | 138 | 34.7% |
| 12 | 116 | 27.4% | 78 | 19.5% | 66 | 17.1% | 38 | 9.4% | 64 | 16.1% |
| 13 | 39 | 9.2% | 52 | 13.0% | 54 | 14.0% | 46 | 11.4% | 57 | 14.3% |
| 14 | 15 | 3.5% | 7 | 1.8% | 13 | 3.4% | 8 | 2.0% | 14 | 3.5% |
| 15 | 15 | 3.5% | 9 | 2.3% | 11 | 2.9% | 14 | 3.5% | 9 | 2.3% |
| 16 | 14 | 3.3% | 10 | 2.5% | 11 | 2.9% | 8 | 2.0% | 2 | 0.5% |
| 17 | 3 | 0.7% | 2 | 0.5% | 4 | 1.0% | . | . | . | . |
| 18 | 2 | 0.5% | . | . | 1 | 0.3% | 2 | 0.5% | 1 | 0.3% |
| More than 18 | 6 | 1.4% | 7 | 1.8% | 5 | 1.3% | 3 | 0.7% | 4 | 1.0% |
| Total | 423 | 100.0% | 400 | 100.0% | 385 | 100.0% | 405 | 100.0% | 398 | 100.0% |

Average Hours

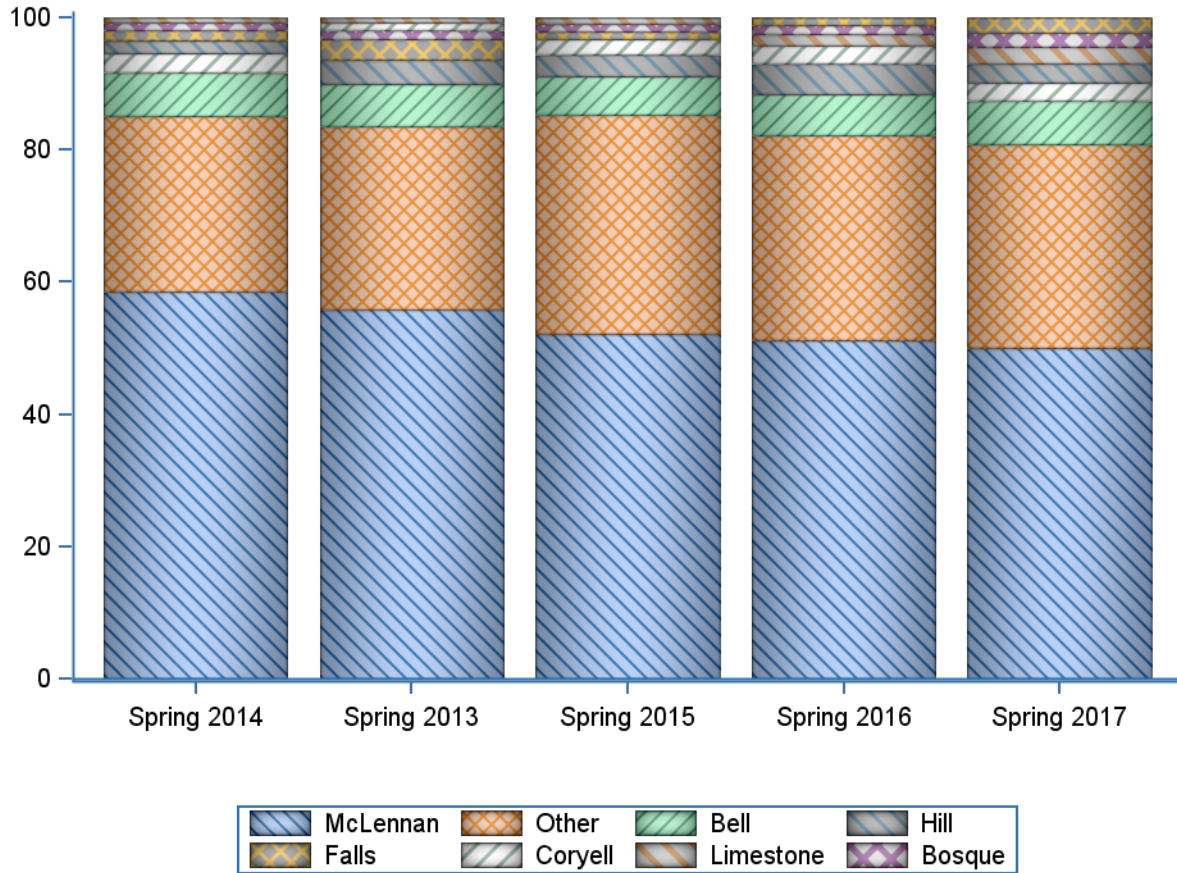


Status is defined by the state definition of full-time, which excludes flex classes

Profile of New Transfer Students, Spring 2013 to Spring 2017 County of Residence

| | Spring 2013 | | Spring 2014 | | Spring 2015 | | Spring 2016 | | Spring 2017 | |
|------------------|-------------|--------|-------------|--------|-------------|--------|-------------|--------|-------------|--------|
| | # | % | # | % | # | % | # | % | # | % |
| Bell | 27 | 6.4% | 27 | 6.8% | 23 | 6.0% | 25 | 6.2% | 26 | 6.5% |
| Bosque | 6 | 1.4% | 5 | 1.3% | 4 | 1.0% | 5 | 1.2% | 9 | 2.3% |
| Coryell | 5 | 1.2% | 11 | 2.8% | 9 | 2.3% | 11 | 2.7% | 11 | 2.8% |
| Falls | 13 | 3.1% | 6 | 1.5% | 5 | 1.3% | 5 | 1.2% | 9 | 2.3% |
| Hill | 16 | 3.8% | 8 | 2.0% | 12 | 3.1% | 19 | 4.7% | 11 | 2.8% |
| Limestone | 3 | 0.7% | 3 | 0.8% | 4 | 1.0% | 7 | 1.7% | 10 | 2.5% |
| McLennan | 236 | 55.8% | 234 | 58.5% | 201 | 52.2% | 207 | 51.1% | 199 | 50.0% |
| Other | 117 | 27.7% | 106 | 26.5% | 127 | 33.0% | 126 | 31.1% | 123 | 30.9% |
| Total | 423 | 100.0% | 400 | 100.0% | 385 | 100.0% | 405 | 100.0% | 398 | 100.0% |

Percent of Enrollment



**Profile of New Transfer Students, Spring 2017
Majors**

| | Count | Percent |
|---|------------|---------------|
| 24010200 - General Studies | 119 | 32.16 |
| 24019900 - Transient, Non-Degree Seeker | 61 | 16.49 |
| 24010100 - Liberal Arts & Sci/Liberal Std | 53 | 14.32 |
| 52020100 - Business Admn & Mgmt, Gnrl | 14 | 3.78 |
| 51070200 - Hosptl & Hlth Care Fac Adm/Mgt | 12 | 3.24 |
| 52010100 - Business/Commerce, General | 10 | 2.70 |
| 51080100 - Medical/Clinical Assistant | 9 | 2.43 |
| 51150200 - Psychiatrc/Mental Hlth Svc Tch | 8 | 2.16 |
| 11020100 - Cmptr Progrmng/Progrmr, Gnrl | 7 | 1.89 |
| 14190100 - Mechanical Engineering | 6 | 1.62 |
| 43010700 - Criminal Justice/Police Sci | 6 | 1.62 |
| 50100300 - Music Management | 6 | 1.62 |
| 14100100 - Elctri, Eltros & Comm Engr | 5 | 1.35 |
| 43020300 - Fire Science/Firefighting | 5 | 1.35 |
| 51080300 - Occupational Therapist Assist | 5 | 1.35 |
| 52030100 - Accounting | 5 | 1.35 |
| 13120600 - Teacher Educ, Multiple Levels | 3 | 0.81 |
| 14010100 - Engineering, General | 3 | 0.81 |
| 26010100 - Biology/Biological Sci, Gnrl | 3 | 0.81 |
| 43010400 - Criminal Justice/Safety Stds | 3 | 0.81 |
| 51090400 - Emergency Med Tchn (EMT Prmdc) | 3 | 0.81 |
| 11060100 - Data Entry/Mcrocmptr Apps Gnrl | 2 | 0.54 |
| 11100200 - Syst, Networkng, & LAN/WAN Mgt | 2 | 0.54 |
| 12040100 - Cosmetology/Cosmetologist Gnrl | 2 | 0.54 |
| 51150100 - Substance Abuse/Addictn Cnsng | 2 | 0.54 |
| 52090100 - Hospitality Admn/Mgmt, Gnrl | 2 | 0.54 |
| 52150100 - Real Estate | 2 | 0.54 |
| 12040900 - Aesthtcn/Esthtcn, Skn Care Spc | 1 | 0.27 |
| 14080100 - Civil Engineering, General | 1 | 0.27 |
| 16160300 - Sign Lng Intrprtatn & Trnslatn | 1 | 0.27 |
| 19070600 - Child Development | 1 | 0.27 |
| 27010100 - Mathematics, General | 1 | 0.27 |
| 40050100 - Chemistry, General | 1 | 0.27 |
| 51070700 - Hlth Info/Medical Rcrds Tchn | 1 | 0.27 |
| 51071600 - Mdcl Admn/Exc Asst/Mdcl Scrtry | 1 | 0.27 |
| 51150300 - Clinical/Medical Social Work | 1 | 0.27 |
| 51390100 - Licensed Practical/Vocational | 1 | 0.27 |
| 52030200 - Accounting Tchn & Bookkeeping | 1 | 0.27 |
| 52040700 - Bus/Ofc Automtn/Tch/Data Entry | 1 | 0.27 |
| Total | 370 | 100.00 |